



GREENAWN
格绿朗室外遮阳

STARRY PERGOLA

Manual Type / Motorized Type



■ GR-9200A

Starry Pergola

Starry pergola is a semi-permanent premium aluminum pergola with Aluminum innovative louvres, posts with round corner design, led lighting system to provide a perfect shade for your outdoor area. It is made of high-quality aluminum, which guarantees durability and solidity of the structure. Adjustable top blades allow you to choose between sun and shade seating

- ✓ Aluminum construction with long service life
- ✓ Integrated roof gutter
- ✓ Maximum load up to 60 kg / m²
- ✓ Aluminum blades
- ✓ Easy to build with assembly instructions
- ✓ White/grey color option

GR-9200A

Either motorized by remote control or manual by hand crank operation based on customer's choice



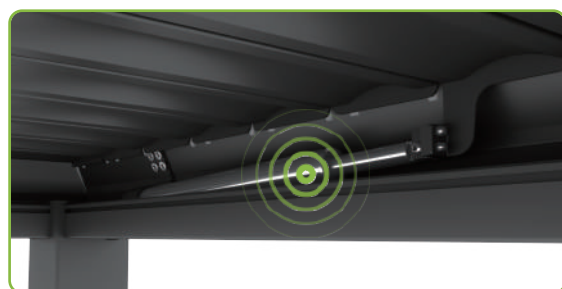
Aluminum louver



Better heat insulation



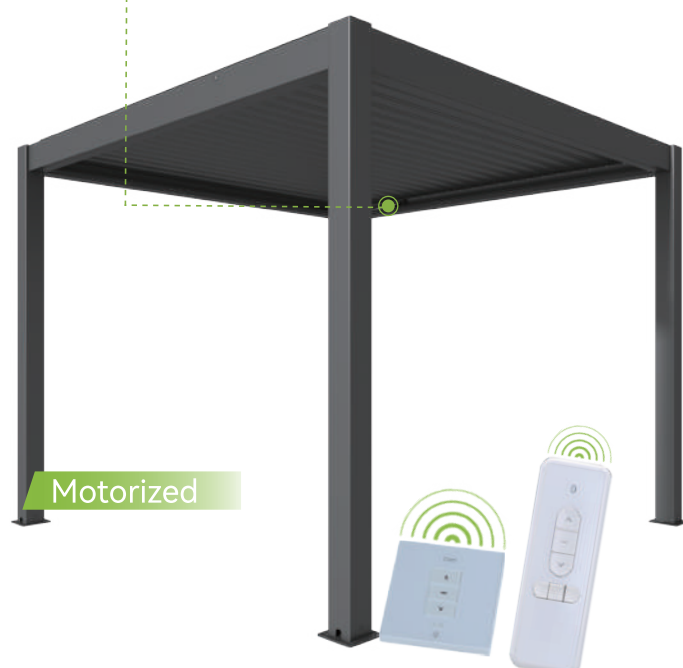
Motorised with light



Professional advanced waterproof IP67 motor, 24V low voltage, more stable and safer



Manual crank

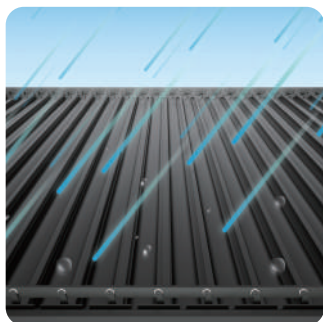


Motorized

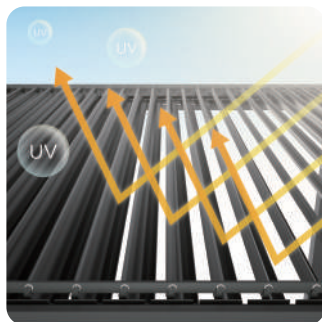
FUNCTIONAL FEATURES

Sun-proof, waterproof, ventilated

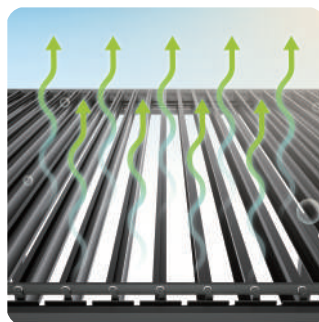
It's adopted with a new generation of shading technology, which has a very good function of shading and rain protection. By flexibly adjusting the opening and closing state of the blades, you can also adjust the light and ventilation effects, and choose the best way to start outdoor leisure life. It can withstand wind rating 28m/S (100km/h)



- Rainproof, snow-proof, windproof



- Sun-proof Anti-UV



- Ventilated



- Closed



- Flexible adjustment of opening and closing angle

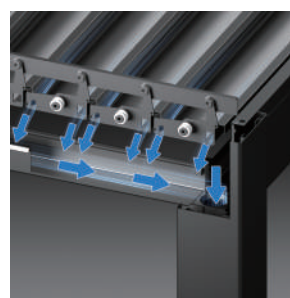


- Open

DRAINAGE SYSTEM

Hidden drainage system, no fear of heavy rain

Rainwater stream through the internal gutter system and to posts of the structure which is a practical and clever solution.



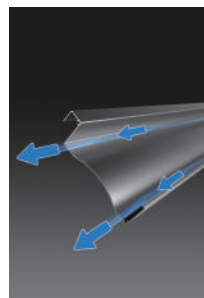
- Hidden drainage system



- Water being flowed into post



- Drain to the lower end of the post



- Blade grooves facilitate diversion



Closed Slats



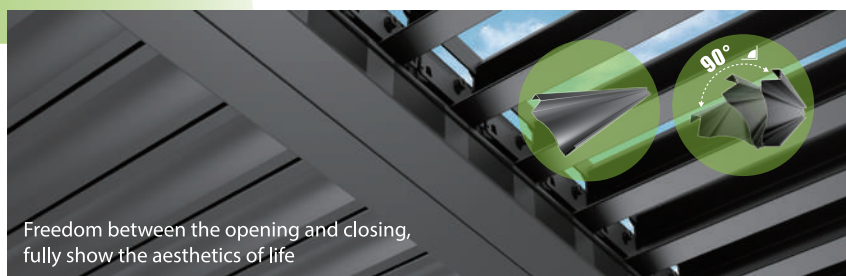
Half-Open Slats 45°



Slats Open 90°

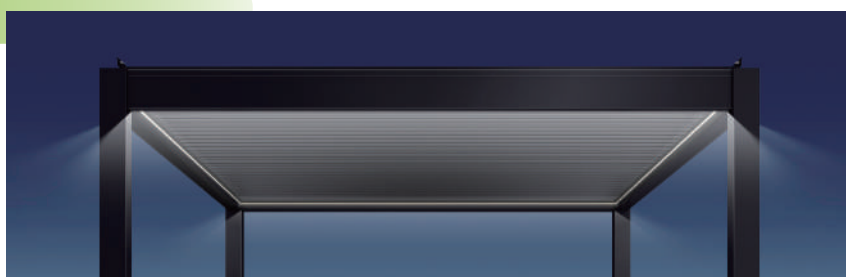
LOUVER SYSTEM

Aluminum waterproof blades,
stronger and better heat insulation



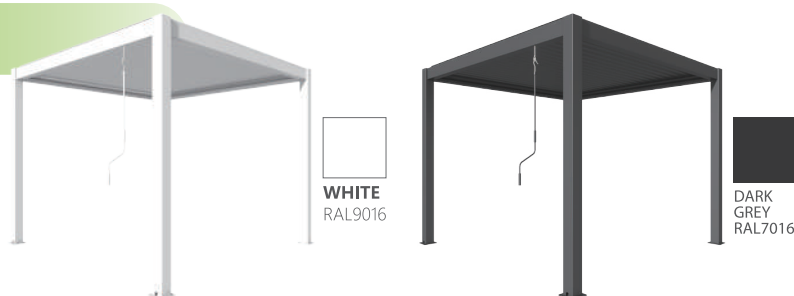
LIGHTING SYSTEM

Special waterproof LED lighting
system, 24V low voltage stable and
safe



FASHION COLOR

Professional outdoor powder coating,
waterproof and dustproof, durable



Post	Aluminum 120 x 120 x 1.4 mm
Main Beam	Aluminum 150 x 62 x 1.4 mm (Manual type)
Main Beam	Aluminum 170 x 47 x 1.4 mm (Motorized type)
Beam	Aluminum 150 x 40 x 1.4 mm (Manual type)
Beam	Aluminum 170 x 25 x 1.4 mm (Motorized type)
Louver	Aluminum 131 x 32 x 1 mm
Gutter	Aluminum 58 x 56 x 1.5mm (Manual type)
Gutter	Aluminum 58 x 66 x 1.4mm (Motorized type)
Size	3X3 / 3X4 / 4X4 / 6X4 m

Sliding Glass Door

Convert your backyard or garden to be a fully enclosed room, durable and safe



Blinds

Manual blinds, Manual blinds with zipper and Motorized blinds with zipper can be optional. Meet all possible assembly request



Shutters

Different styles of shutters, elegant and stable





GREENAWN
格绿朗室外遮阳



YouTube: Villa Pergola
Facebook: Greenawn Pergola